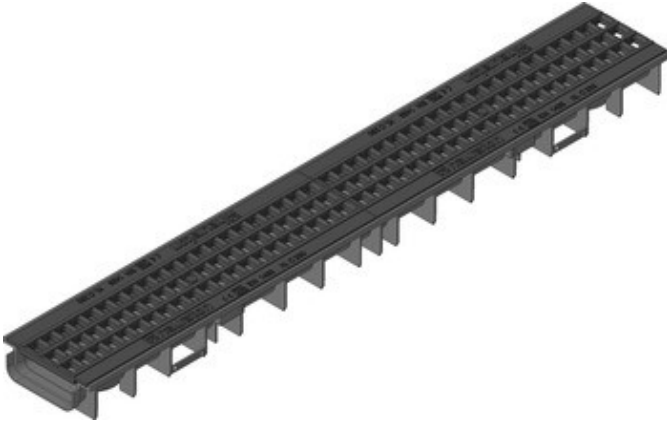
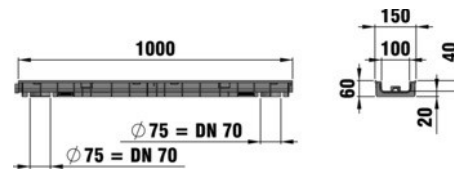


# RECYFIX®STANDARD 100

RECYFIX®STANDARD 100, class C 250, Type 60 with GUGI-Ductile iron mesh grating MW 15/25, black, locked\*



C 250



## ■ Technical data:

Length mm	Width mm	Height mm	Weight kg	Inlet cross-section cm <sup>2</sup> /m	Drainage cross-section cm <sup>2</sup>	Inlaying depth	Item-no.
1000	150	60	6,85	444	35	5	40239

## ■ Product description:

RECYFIX STANDARD 100 type 60 - Channel made of PE-PP-recycled plastic, according DINV19580 / EN 1433, with GUGI-ductile iron mesh grating, mesh width 15/25, black with locking device, loading capacity from A 15 up to C 250, L/W/H 1000x146x60 mm, Item No. 40239

## ■ Material:

- **Channel body:** modified Polypropylene
- **Bolts:** Steel black galvanised
- **Locking handle:** RECYFIX Material (recycled PA)
- **Grating:** Ductile iron GJS 500-7

## ■ Type acc. DIN EN 1433:

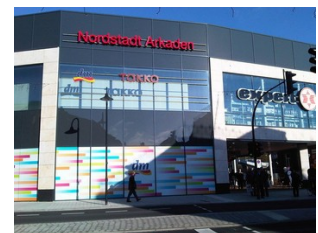
M

## ■ Set of rules:

EN 1433

## ■ Application areas:

- Railway platform
- Facade drainage
- Flat roofs, terraces and balconies
- Pedestrian zones
- Gardening and landscaping
- Multi storey car parks
- Market squares, markets



- Public areas and squares
- Cityscapes with architectural value
- Cycle paths and footpaths
- School yards
- Underground car parks, multi-storey car parks
- Access drives private